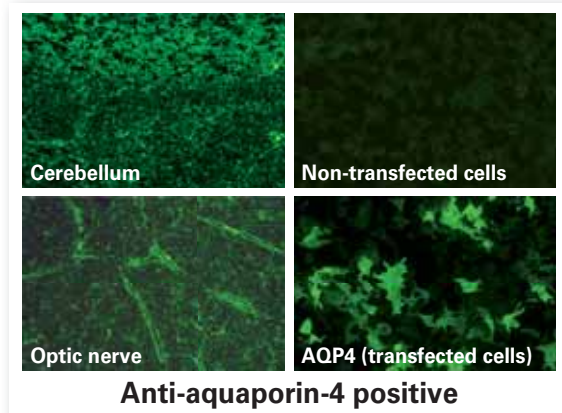
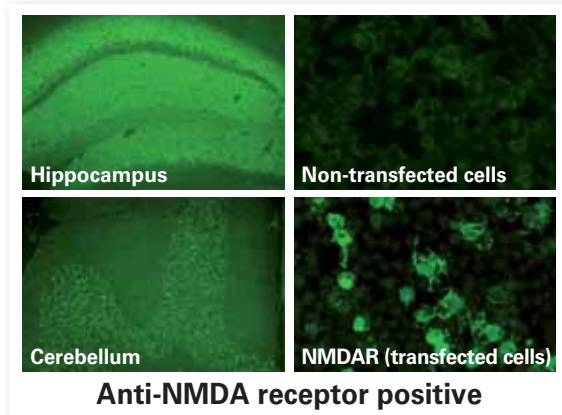
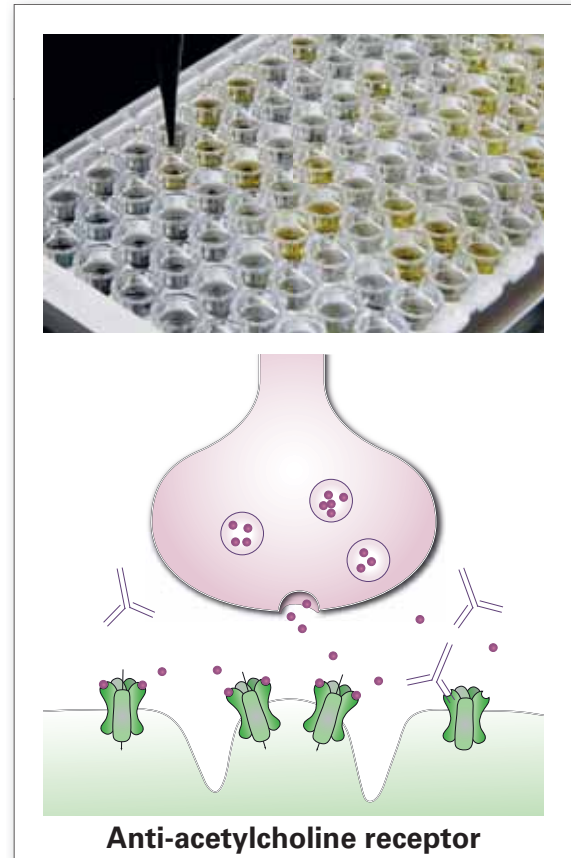




Autoantibodies against neuronal antigens



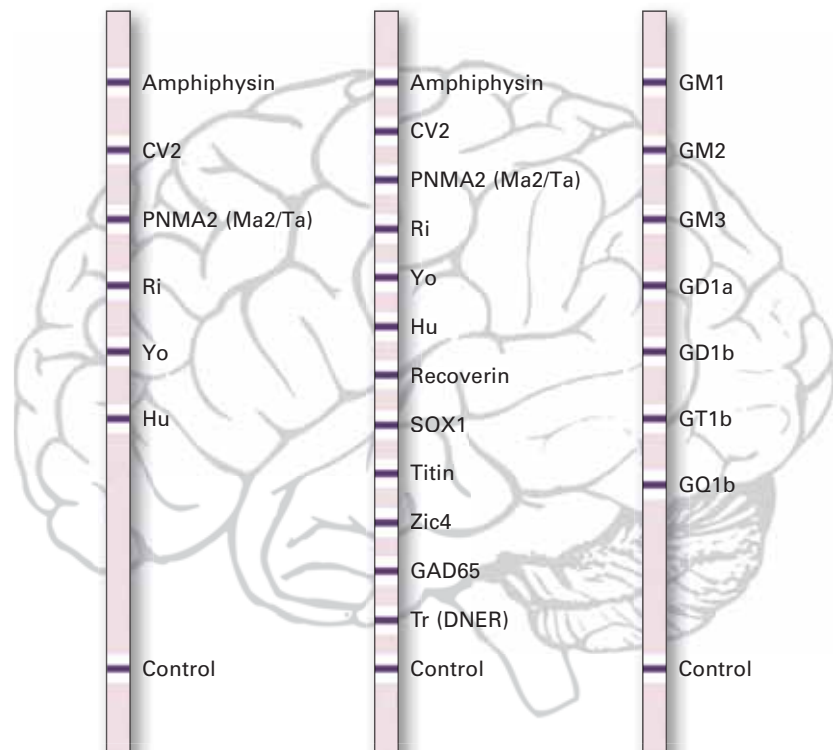
Indirect immunofluorescence



ELISA /RIA

- Hu, Ri, Yo, Tr
- MAG
- MOG
- Myelin
- Ma/Ta
- GAD
- Recoverin
- Amphiphysin
- CV2
- Gangliosides
- VGKC (LGI1 + CASPR2)
- VGCC
- DPPX
- Aquaporin-4
- Glycine receptors
- NMDA receptors
- AMPA receptors
- GABAB receptors
- Acetylcholine receptors
- SOX1
- Titin
- Zic4
- Tr (DNER)

Examples of relevant target antigens



EUROLINE