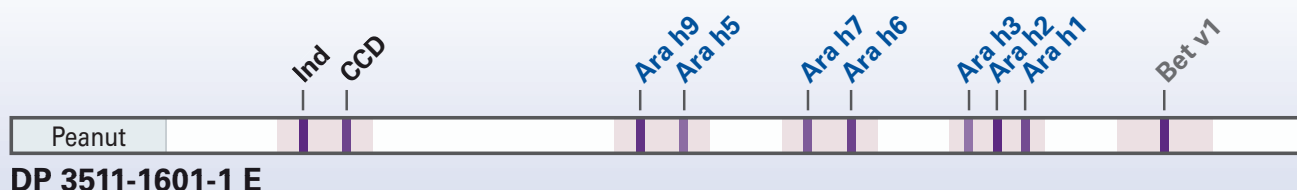
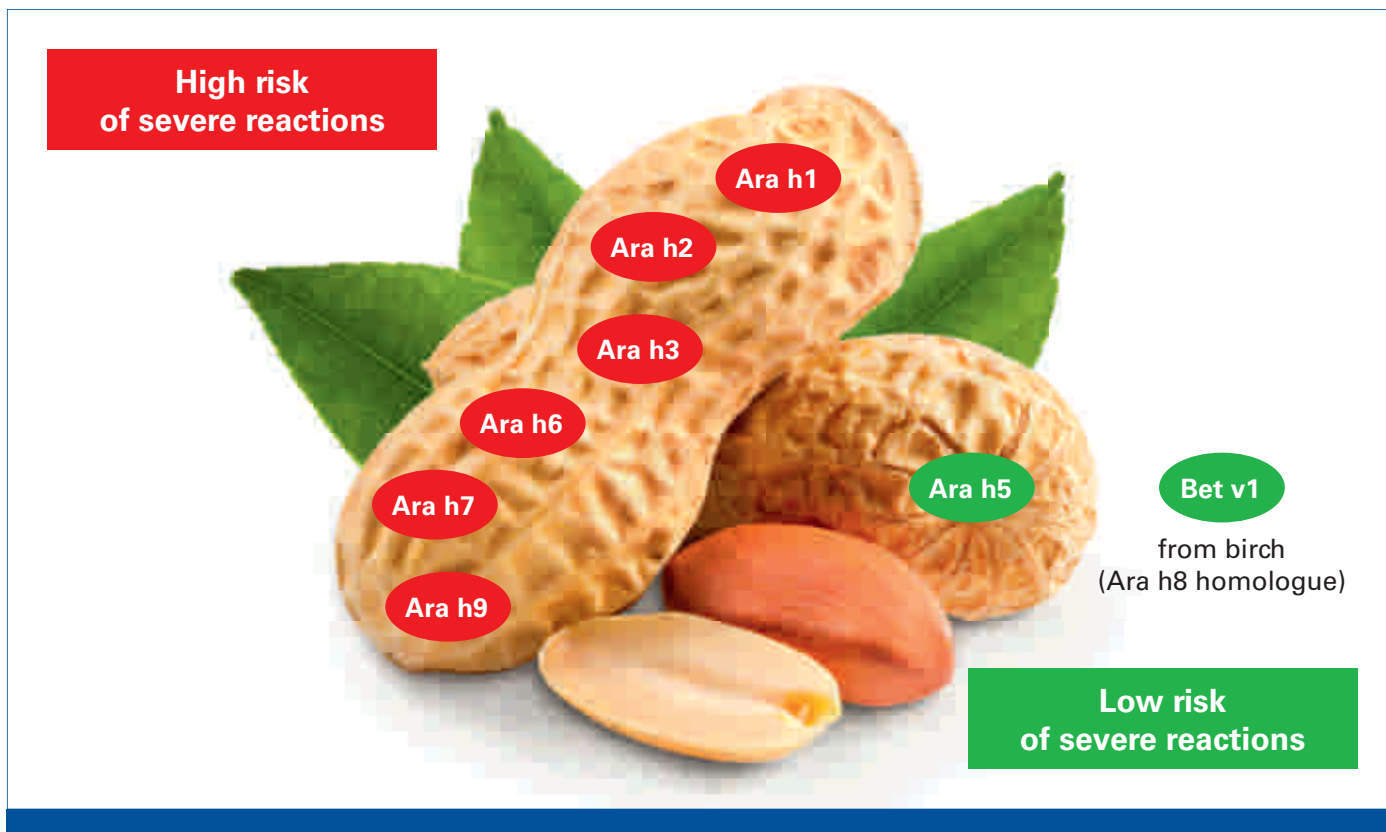




First component-based multiparameter test for peanut allergy

# EUROLINE DPA-Dx\* Peanut 1

Unique features **Ara h5** & **Ara h7**



## Precise analysis for optimal patient management

- Differentiation between true peanut allergy (**Ara h1–9**) and pollen-associated cross reactions (**Bet v1**)
- Well-informed risk assessment for severe reactions
- Targeted dietary advice in sensitisations to low-risk components (**Ara h5** & **Bet v1/Ara h8**)
- Small amount of serum (100–400 µl) is sufficient – ideally suited for pediatrics

\* Defined partial allergen diagnostics